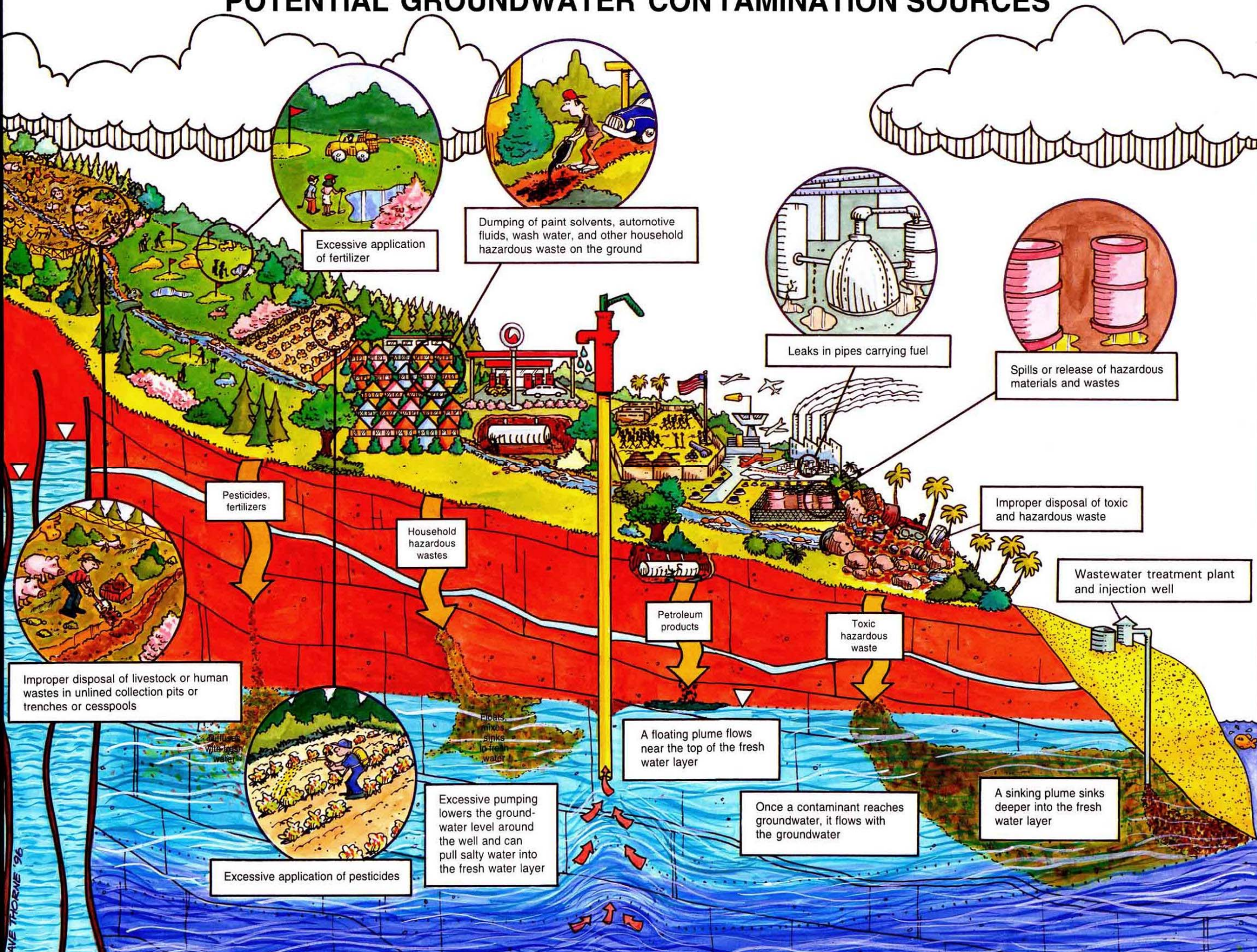


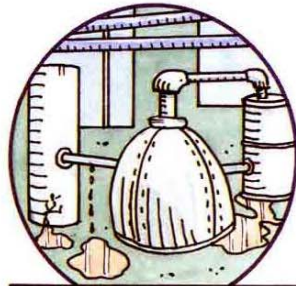
POTENTIAL GROUNDWATER CONTAMINATION SOURCES



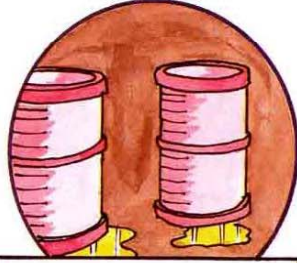
Excessive application of fertilizer



Dumping of paint solvents, automotive fluids, wash water, and other household hazardous waste on the ground



Leaks in pipes carrying fuel



Spills or release of hazardous materials and wastes



Improper disposal of livestock or human wastes in unlined collection pits or trenches or cesspools

Pesticides, fertilizers

Household hazardous wastes

Petroleum products

Toxic hazardous waste

Improper disposal of toxic and hazardous waste

Wastewater treatment plant and injection well



Excessive application of pesticides

Excessive pumping lowers the groundwater level around the well and can pull salty water into the fresh water layer

A floating plume flows near the top of the fresh water layer

Once a contaminant reaches groundwater, it flows with the groundwater

A sinking plume sinks deeper into the fresh water layer

Floats, mixes, sinks in fresh water